

DESIGN TECHNOLOGY – Transition project

The Design Technology department have a choice of two different transition tasks for you to choose from:

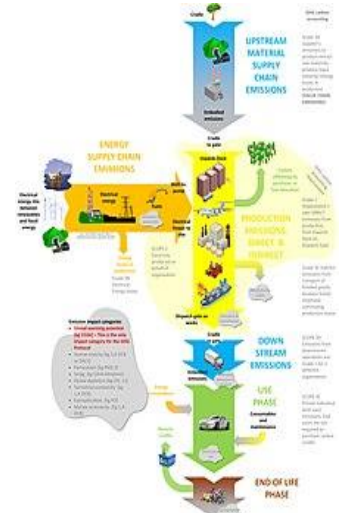
A 'LCA' or Life Cycle Assessment is part of the specification. It takes a product from 'cradle to grave' and looks at the impact of all stages on the planet.

TASK 1

To watch the YouTube video on **Life Cycle Assessment** of a mobile phone. Then create an A3 ppt slide or an A3 poster detailing the stages and the facts which you think are most important. Use the link below

<https://www.youtube.com/watch?v=cbC9OtGqonE&t=635s>

Or a Life Cycle Assessment of another product of your choice.



Technology push is where a NEW technology is invented and then designers and engineers use it in a new product or to develop an existing product.

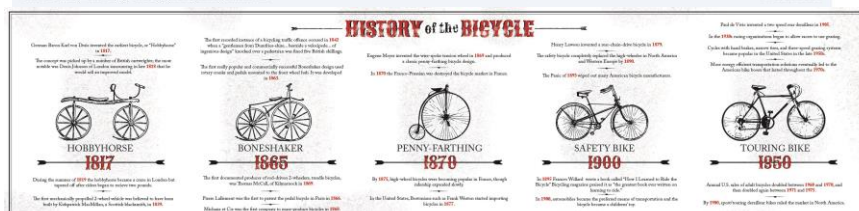
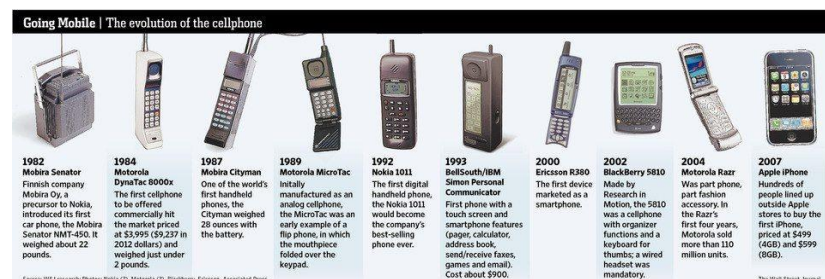
Technology push has developed mobile phones dramatically over 50 years.

TASK 2

Create a timeline of a mobile phone which states the 'technology push', the year and image of a mobile phone.

<https://www.youtube.com/watch?v=05Aug4d0qaQ>

Or a timeline of technology push in another product of your choice.



It must be brought to your first lesson in year 12

paper or PowerPoint